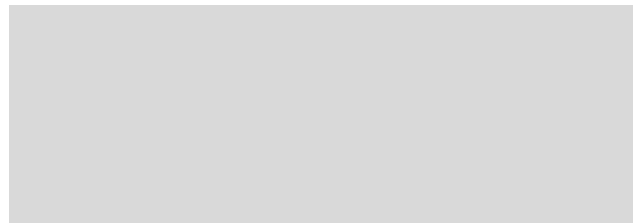




# Company Profile

Industrial Building & Roofing Contractors



**To whom it may concern**

**COMPANY PARTICULARS:**

Name: Industrial Building and Roofing Contractors cc

Status: Industrial, Commercial and Housing Contractors

**Contacts:**

Dutch Van Leeuwen: +27605375319, email [dutch@ibrcontractors.co.za](mailto:dutch@ibrcontractors.co.za)

Ryan Van Leeuwen: +27713600284, email [ryan@ibrcontractors.co.za](mailto:ryan@ibrcontractors.co.za)

Head Office: +27317645206, email [admin@ibrcontractors.co.za](mailto:admin@ibrcontractors.co.za)

## INTRODUCTION

We would like to take the opportunity of introducing our company and offering our services to tender and negotiate on any building which you may have had designed or be involved in. Alternatively, we can offer a Turnkey Package, including the services of a professional team, to design a building to your requirements, local authority approvals, supervise and to build same.

Industrial Building & Roofing Contractors (IBR Contractors) was established in 1999 to undertake both building and roof sheeting contracts.

We specialize in Commercial and Industrial projects, New and/or alterations/additions.

We also undertake Residential projects new and/or alterations/additions.

***The following are just some of the Projects we have completed during the past couple of years: -***

## INDUSTRIAL BUILDINGS – FACTORIES

### ❖ Walker Machine Tools

- New Building Showroom & Offices. Pinetown

### ❖ Tegs Timbers

- New warehouse, factory and offices
- Warehouse & Canopies 7306m<sup>2</sup>, Offices 563m<sup>2</sup>, Hardstands 5676m<sup>2</sup>
- Riverhorse Business Park

### ❖ Pharmed Pharmaceuticals

- New warehouse and office block
- Factory 5187m<sup>2</sup>, Offices 1693m<sup>2</sup>, Hardstands 4500m<sup>2</sup>
- Riverhorse Business Park

### ❖ Bait Specialists

- New commercial building with FNB as anchor tenant
- Double story with upper level parking 1585m<sup>2</sup>
- 46 Brick Hill Road, Durban

❖ Strand group

- New Factory and Offices for Volcano Chemicals
- Warehouse, offices and ablutions 2750m2
- Duiker Road, Canelands
- Contact Mr. Karl Mangard C 0824584130 or Architect Alec Collier 031 2668390

❖ Strand group & Spunchem Africa

- Marshall Drive, Mt Edgecombe
- New Factory and Offices & Warehouse Extension

❖ Old Mill - Mt Edgecombe

- Redevelopment of Existing Buildings in extent approx. 20 000m2

❖ Hebprop cc

- New factory, warehouse and offices for Hebcooler. Marian hill Industrial Park
- Warehouse 6140m2, Offices and Ablutions 650m2, Hardstands 3500m2

❖ Swift Air

- New Warehouse & Offices. Approx. 2500m2 South Coast Road

❖ Dromex

- New factory, Keystone Park, Hammersdale
- Factory 7215m2 , Offices 437m2 & Hardstands circa 3000m2
- Client Keystone Parkcc. Contact Project Manager, Ken Fann, Cell 082 332 0091

❖ Wheatfields Development

- Valley View Road, New Germany
- New Warehouse & Offices. Warehouse 920m2, Offices 220m2
- Architect ArrcDesign. Contact Alec Collier 084 729 1990

❖ Mighty Meats.

- New Factory & Offices - Phase 1 Factory 740m2, Offices 140m2, Phase 2 Factory 906m2, Offices 70m2
- Architect ArcDesign. Contact Alec Collier 084 729 1990

❖ Steel & Pipes

- Surprise Road, Maxmead Ind. Park, Westmead
- Factory extension and addition of New Showroom - 2015m2
- Architect ArcDesign. Contact Gerhard 073 253 3576

❖ Safal

- Factory for Safintra, Cato Ridge
- New Factory & Offices. Factory 2339m2, Offices & Ablutions 288m2
- Architect ArcDesign. Contact Gerhard Cell 073 253 3576

❖ HR Matters Properties

- Dube Tradeport , Erf 788
- New Warehouse & Offices. Warehouse 1550m2 . Offices 365m2
- Contact Project Manager Murray Kyle Cell 083 377 4847

❖ Biddulph's

- Hillclimb Road, Westmead
- Warehouse Extension & New Workshop. 830m2
- Architect ArcDesign. Contact Gerhard 073 253 3576

❖ Evergreen Bags

- Isithebe Industrial Park
- New Warehouse Building. 1450m2

## WALKER MACHINE TOOLS



## PHARMED PHARMACEUTICALS





## OLD MILL



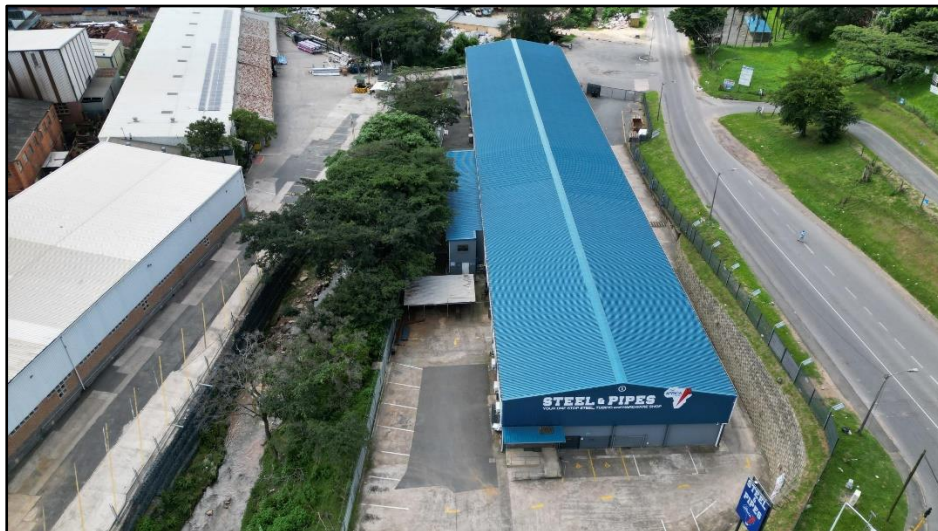
## TEGS TIMBER



## DROMEX



## STEEL & PIPES





## ISITHEBE



## BIDDULPHS



## COMMERCIAL BUILDINGS – SCHOOLS

❖ Thomas More College (2000 – 2023)

- New Science Block (6 x Classrooms)
- 2 x New Class 00 Classroom Blocks
- High School block A (8 x Classrooms)
- High School Block B (8 x Classrooms)
- Senior Primary Block (6 x Classrooms)
- High School Block C, Upgrade to Double Storey Building, (10 x Classrooms)
- Various and ongoing additions and alterations
- Contact: Walker Smith Architects and Principle Agents, Pat Smith 083 775 5188

❖ Lyndhurst School

- New Classroom Blocks and Entrance Hall
- Contact: Schoombi

❖ St Marys School

- Alterations & Additions to ex House and Art Classrooms
- Alterations & Additions to ex Office Block
- Contact Architects CCA, Gareth Calvert Cell 082 257 3590

## LYNDHURST SCHOOL

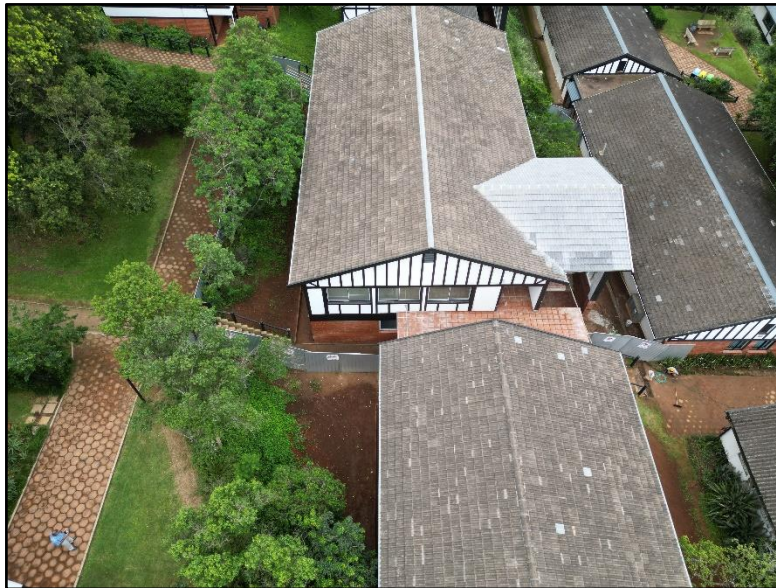


## THOMAS MORE COLLEGE

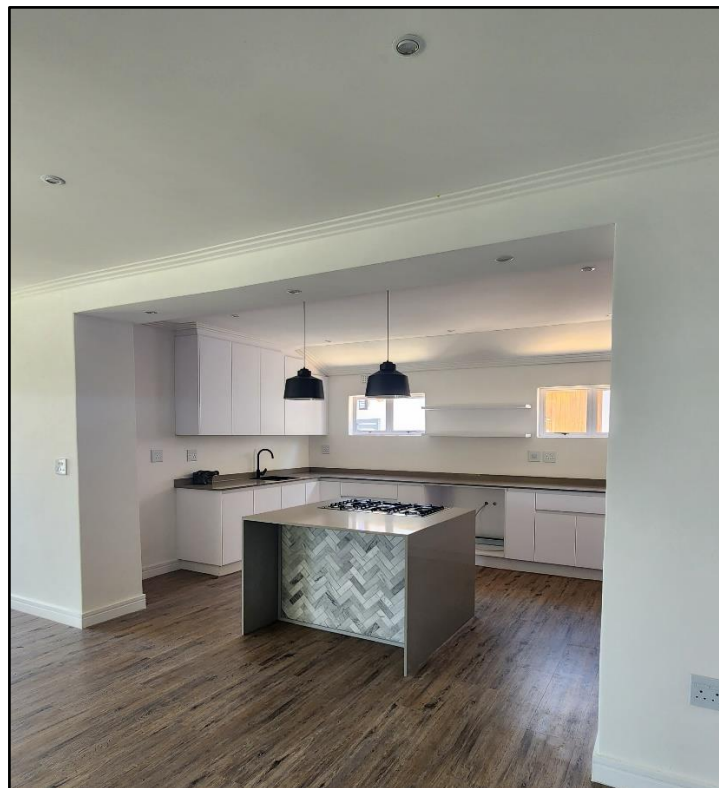








## ST MARYS SCHOOL





## COMMERCIAL BUILDINGS – OFFICES / OTHER

### ❖ Robow Investments

- 2 No Office Block Developments – Brendon Lane, Westville
- Contact Developer/Owner Mr. Eric Verkerk 0824658052

### ❖ FFS Refiners

- New Office Block and Alterations to Existing at 104 Umhlatazana Road, Sea view
- Contact Architect Mr. Grant Waugh 0824221191

### ❖ Nestles

- New Battery Charging Facility at existing premises in New Germany

### ❖ Nestles

- New Recycling Building and Guardhouse at existing premises in New Germany
- Various and ongoing additions and alterations
- Contact Leonie Architect, Alec Collier 031 2668390

### ❖ Stedone Construction

- New Office Block and Alterations/extensions to existing
- 90 Eskom Road, New Germany
- Contact Architect Mr. Roger Colley 031 2668390

### ❖ Stedone Developments

- New Office Park Development (Heritage House) 3 new office blocks – 1200m2
- 20 Old Main Road, Hillcrest

### ❖ Markinson Properties

- New Engen Service Station.
- Otto Volek Road, New Germany
- Contact Owner Mr. Andrew Kramer Cell 082 900 8029

❖ Classic Crown Properties 157 Pty Ltd

- New Office Park Development. The Brook Office Park  
Approx. 3150m2 No 2 Old Main Road, Gillitts
- Contact Developers Innova8 Property Group Mr. Nick  
Proome Cell 082 440 6188 or Mr. Mike Proome 08 625  
1148

❖ St Agnus Church

- Extensions & Additions
- Contact Mr. Stuart Baylis Cell 082 454 3260

❖ Meyrickton Developments Pty Ltd

- New Office Park Development - No 2 Meyrickton Place,  
Hillcrest
- Contact Developers Innova8 Property Group Mr. Nick  
Proome Cell 082 440 6188 or Mr. Mike Proome 08 625  
1148

❖ Braehead Developments Pty Ltd

- New Office Park Development. - No 1 Old main Rd, Kloof
- Contact Developers Innova Property Group Mr. Nick  
Proome Cell 082 440 6188 or Mr. Mike Proome 08 625  
1148

❖ Loudon Developments Pty Ltd

- New Office Park Development - No 8 St Mary's Rd, Kloof
- Contact Developers Innova8 Property Group Mr. Nick  
Proome Cell 082 440 6188 or Mr. Mike Proome 08 625  
1148

❖ First National Bank (FNB)

- New offices for FNM, PMB
- Basement Parking, Ground Floor & First Floor Offices, circa  
2700m2
- Client Prospect SA Investments 79. Contact Nick Proome  
Cell 082 440 6188

## **BROOK OFFICE PARK**



## **LOUDON OFFICE PARK**



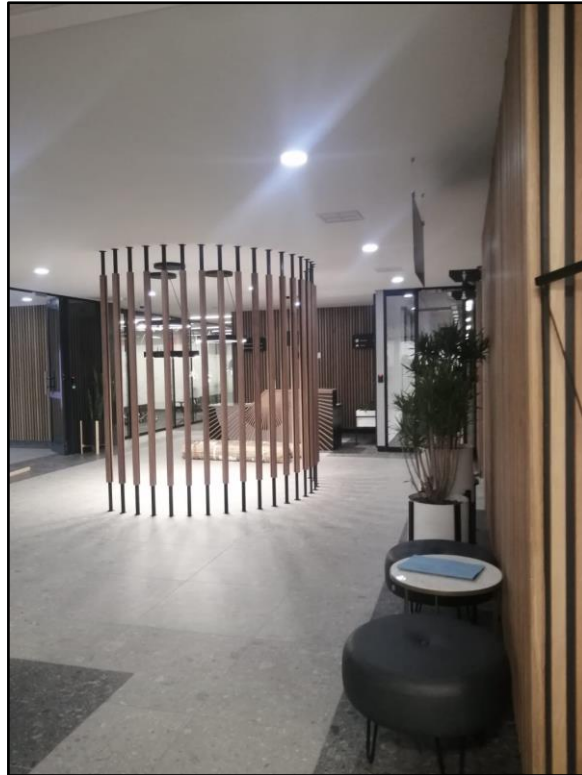


## MEYRICKTON OFFICE PARK



## FIRST NATIONAL BANK





## HOUSING CONTRACTS

- ❖ House Stevenson (Drummond)
  - Phase 1 – Alterations & additions to existing cottage
  - Phase 2 – New 3 x bedroomed home in extent approx. 300m2
    - Contract Grant or Debbie Stevenson cell 0834598679
- ❖ House Baylis (Winston Park)
  - Phase 1 – New 3 x bedroomed home in extent approx... 250m2
  - Phase 2 – New Garage building and alterations to existing cottage building
    - Contact Stuart or Ann Baylis cell 0824543260
- ❖ Ipiti Village, Ipiti Gardens and Mudalay Gardens (Kloof)
  - Ipiti Village (11 Ipiti Road, Kloof) – Secure Multi Unit Development comprising 8 Dwellings.
  - Ipiti Gardens (6 Ipiti Road, Kloof) – Secure Multi Unit Development comprising 6 Dwellings



- Mudalay Gardens (35 & 37 Pioneer Road, Kloof) – Secure Multi Unit Development comprising of 4 Dwellings
  - Contact Owner/Developer Mr. G. Van Leeuwen 060 587 5319
- ❖ House Maître (Kloof)
  - New Double Garage building and various extensions and alterations to existing house
    - Contact Shaun Maître cell 0834481568
- ❖ House Lutz (Alverstone)
  - New 3 x bedroomed double storey home and outbuildings in extent approx. 400m2
    - Contact Sven Lutz cell 0828891602
- ❖ House King (Durban North)
  - Various extensions and alterations to existing house
    - Contact Katrina King cell 0827460604
- ❖ House Ford (Kloof)
  - Various extensions and alterations to existing house
    - Contact Peter Scheepers 0725322129
- ❖ House Von Mollendorf (Cotswold)
  - New House 350m2, value R3m. Cotswold Site 1744
    - Contact Mr. Steve von Mollendorf Cell 0846762050
- ❖ House 2606 (Cotswold)
  - New House 400m2, value R3.5m. Cotswold Site 2606
    - Contact Architect Rep Mr. Ken Ground Cell 0824566366
- ❖ House Jones (Cotswold)
  - New House 600m2, value R5.1m. Cotswold Site 2578
    - Contact Mr. Mike Jones Cell 0836610317
- ❖ House White (Cotswold)
  - Various extensions and alterations to existing house, value R6m
    - Contact QS rep Steve Von Mollendorf Cell 0846762050

## COTSWOLD HOUSES









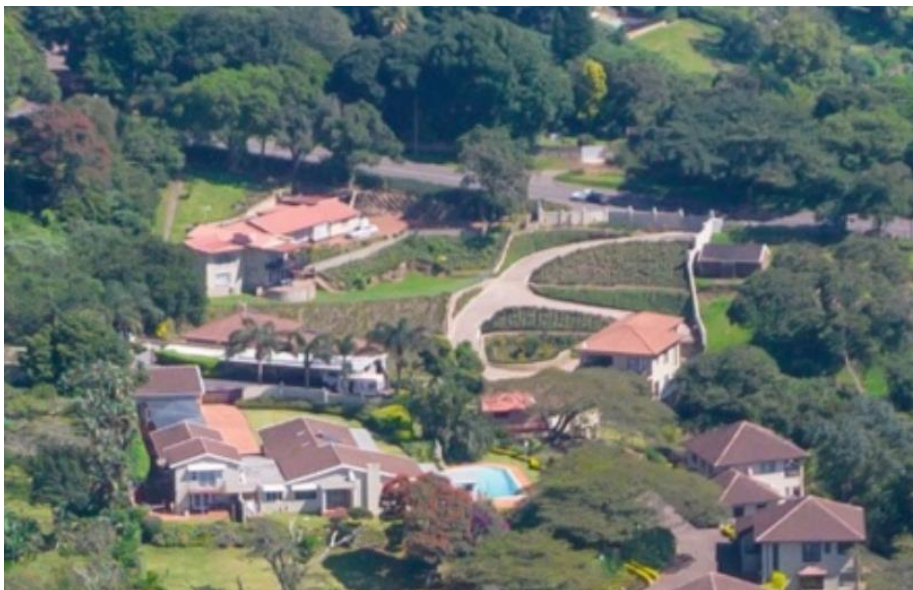




## **IPITI VILLAGE**



## **IPITI & MUDALAY GARDENS**



## CONSULTANTS THAT WE HAVE WORKED WITH: -

### Architects

- ❖ Arcdesign - Contact Alec Collier 0847291990
- ❖ Walker Smith Architect – Contact Pat Smith 083 775 5188
- ❖ Elphick Proome Architects (EPA) – Contact Nick Proome 0824406188
- ❖ TC RPV Architects – Contact Philip Thornhill 0837799617

### Engineers

- ❖ CSI – Contact Adam Oldfield Cell 083 775 8313
- ❖ Gordon Fleming & Associates – Contact Richard Fleming 0824690149
- ❖ Guy Northard & Associates – Contact Guy Northard 0834504206
- ❖ BPH Consulting Engineers – Contact Pieter Boorsma 0832551809
- ❖ Sutherland Engineers – Contact Ian Van Rooyen 0824506688

### SOME OF OUR PREFERRED SUPPLIERS

- ❖ Clotan Steel, Safintra, Hulamin Aluminum, Modek – Metal & Polycarbonate Sheeting
- ❖ Cretemix, Lafarge, Métier, AKR – Ready mixed Concrete
- ❖ Corobrik, Brick Foundation, Killarney Brick, Trubrik, Actisol – Bricks & Blocks
- ❖ Builders Trade Depot (Feds), Gillitts Hardware, Build It– General building materials suppliers
- ❖ Brian Roberts Agencies – Specialized building materials supplier
- ❖ Geoplastic Sales, Global Insulation, Kare Industries – Roofing insulation & fixings

### SOME OF OUR PREFERRED CONTRACTORS

- ❖ Cousins Steel International (Adam Oldfield Cell 083 775 8313) – Structural Steel & Roof coverings
- ❖ Rock Solid Civils (Ant Cox Cell 082 322 1464) - Driveways and Parking Areas
- ❖ Country Contracts (Russ Cell 082 465 5868) - Fire Protection Services
- ❖ Alugant (Leon Grobler Cell 083 251 5721) – Aluminum gutters and down pipes
- ❖ Sandpiper Trading (Alan Brown Cell 0837774818) – Metalwork (stairs, balustrades etc.)
- ❖ Taylor Eng. (Martin Taylor Cell 082 806 4276) – Metalwork (stairs, balustrades etc.)

- ❖ Hillcrest Electrical (Brian Manderson Cell 082 770 0437) – Electrical Contractors
- ❖ CSI Electrical (John Buckle Cell 0832527114 - Electrical Contractors
- ❖ Circle Reinforcing (Martin Cell 0832986443) – Reinforcing Steel
- ❖ Plumb King (Ryan Laskey Cell 071 889 5169) – Plumbing Contractors
- ❖ Candy Plumbers (Kelvin Cell 0824469833) – Plumbing Contractors
- ❖ Drywall Kingdom (Matt Cell 082 800 8492) - Drywalling & Ceilings
- ❖ Asow Floors and Ceilings (Yandisa cell 0837487733) – Ceilings & Partitioning
- ❖ Challenge Glass & Aluminum (Desmond Cell 0828231625) – Aluminum doors, Windows & Glazing
- ❖ City Glass & Aluminum (Thamashen Cell 081 709 7444) – Aluminum doors, Windows & Glazing
- ❖ Home Air (Simon Berry Cell 0828032367) – Air Conditioning

Please feel free to contact any of the companies/persons mentioned in this CV to confirm our performance record and bona fides.

We are positive that we can add value to your building requirements by offering you our exceptional and professional services. We look forward to meeting you at any time soon so please don't hesitate to contact Ryan on 0713600284 or Dutch on 0605875319.

Kind regards,



Ryan and Dutch Van Leeuwen

